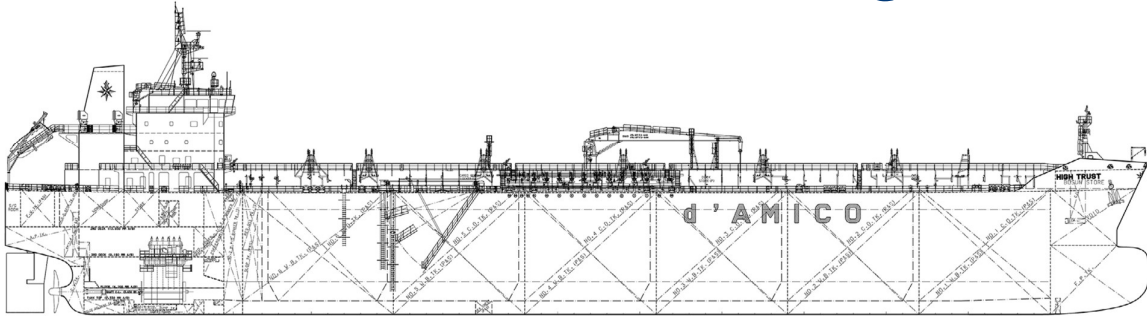
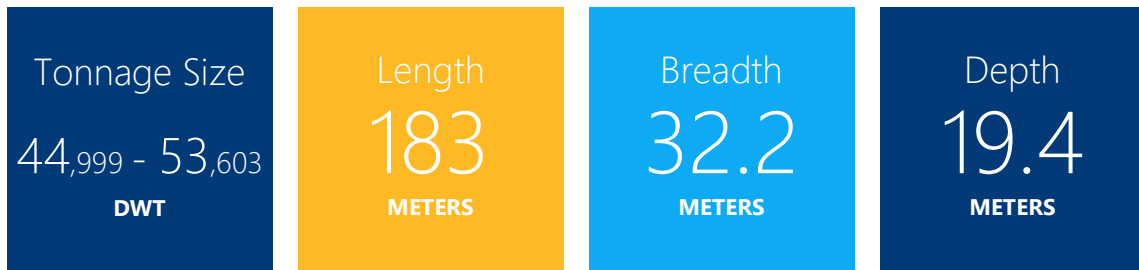




# MR / Medium Range



## Vessel Details



## Medium Range Fleet

Owned Vessel	Year built	Tonnage size	Builder/Country	IMO Classified
High Challenge	2017	50,000 DWT	Hyundai Mipo, South Korea (Vinashin)	IMO II/IMOIII
High Wind	2016	50,000 DWT	Hyundai Mipo, South Korea (Vinashin)	IMO II/IMOIII
High Seas	2012	51,678 DWT	Hyundai Mipo, South Korea	IMO II/IMOIII
High Tide	2012	51,768 DWT	Hyundai Mipo, South Korea	IMO II/IMOIII
GLEND A Melissa <sup>1</sup>	2011	47,203 DWT	Hyundai Mipo, South Korea	IMO II/IMOIII
GLEND A Mery <sup>2</sup>	2011	47,251 DWT	Hyundai Mipo, South Korea	IMO II/IMOIII
GLEND A Melody <sup>1</sup>	2011	47,238 DWT	Hyundai Mipo, South Korea	IMO II/IMOIII
GLEND A Melanie <sup>2</sup>	2010	47,162 DWT	Hyundai Mipo, South Korea	IMO II/IMOIII
GLEND A Meredith <sup>2</sup>	2010	46,147 DWT	Hyundai Mipo, South Korea	IMO II/IMOIII

<sup>1</sup> Vessel owned by GLEND A International Shipping d.a.c. In which DIS has 50% interest and Time Chartered to d'Amico Tankers d.a.c.

<sup>2</sup> Vessel owned by GLEND A International Shipping d.a.c. In which DIS has 50% interest



High Venture	2006	51,087 DWT	STX, South Korea	IMO II/IMOIII
High Progress	2005	51,303 DWT	STX, South Korea	IMO II/IMOIII
High Performance	2005	51,303 DWT	STX, South Korea	IMO II/IMOIII
High Valor	2005	46,975 DWT	STX, South Korea	IMO II/IMOIII
High Courage	2005	46,975 DWT	STX, South Korea	IMO II/IMOIII

<b>Bare-Boat with purchase option/obligation</b>	<b>Year built</b>	<b>Tonnage size</b>	<b>Builder/Country</b>	<b>IMO Classified</b>
High Trust	2016	49,990 DWT	Hyundai Mipo, South Korea (Vinashin)	IMO II/IMOIII
High Trader	2015	49,990 DWT	Hyundai Mipo, South Korea (Vinashin)	IMO II/IMOIII
High Loyalty	2015	49,990 DWT	Hyundai Mipo, South Korea	IMO II/IMOIII
High Freedom	2014	49,990 DWT	Hyundai Mipo, South Korea	IMO II/IMOIII
High Discovery	2014	50,036 DWT	Hyundai Mipo, South Korea	IMO II/IMOIII
High Voyager	2014	45,999 DWT	Hyundai Mipo, South Korea	IMO II/IMOIII
High Fidelity	2014	49,990 DWT	Hyundai Mipo, South Korea (Vinashin)	IMO II/IMOIII
High Priority	2005	46,847 DWT	Nakai Zosen, Japan	

<b>TC-IN Long Term with purchase option</b>	<b>Year built</b>	<b>Tonnage size</b>	<b>Builder/Country</b>	<b>IMO Classified</b>
High Leader	2018	50,000 DWT	Japan Marine United Co., Japan	IMO II/IMOIII
High Navigator	2018	50,000 DWT	Japan Marine United Co., Japan	IMO II/IMOIII
High Explorer	2018	50,000 DWT	Onomichi, Japan	IMO II/IMOIII
High Adventurer	2017	50,000 DWT	Onomichi, Japan	IMO II/IMOIII
Crimson Jade	2017	50,000 DWT	Minaminippon Shipbuild, Japan	IMO II/IMOIII
Crimson Pearl	2017	50,000 DWT	Minaminippon Shipbuild, Japan	IMO II/IMOIII

<b>TC-IN Long Term without purchase option</b>	<b>Year built</b>	<b>Tonnage size</b>	<b>Builder/Country</b>	<b>IMO Classified</b>
High Prosperity	2006	48,711 DWT	Imabari, Japan	-
High SD Yihe <sup>3</sup>	2005	48,700 DWT	Imabari, Japan	-
SW Tropez	2004	46,992 DWT	STX, South Korea	IMO II/IMOIII

#### **TC-IN Short Term**

Di Matteo (ex-High)	2009	46,800 DWT	Nakai Zosen, Japan	-
Celsius Rimini	2009	53,603 DWT	Shin Kurushima Dockyard, Japan	-
SW Southport I	2004	46,992 DWT	STX, South Korea	IMO II/IMOIII

<sup>3</sup> Former High Presence sold by d'Amico Tankers in Feb'18 and taken back in time charter for 6 years



<b>Vessel under Commercial Agreement</b>	<b>Year built</b>	<b>Tonnage size</b>	<b>Builder/Country</b>	<b>IMO Classified</b>
Philoxenia	2019	49,999 DWT	Hyundai MIPO, South Korea	IMO II/III
Falcon Bay	2009	47,147 DWT	Hyundai MIPO, South Korea	IMO II/III
Eagle Bay		47,134 DWT	Hyundai MIPO, South Korea	IMO II/III